



Raritan Headwaters

Your water is our mission.

April 13

**Stream
Cleanup**

2019

In this document you will find details for each site that includes the general location, approximate address, GPS Coordinates, parking area, special notes about the site, trash drop off location and driving directions. The site descriptions are organized by site number. Please note, that some sites include multiple areas for removing trash. On the morning of the cleanup, you will be greeted by your volunteer site coordinator at the designated meeting location. The volunteer site coordinator will have you sign-in and provide you with your trash bags, gloves, water, and snacks. The volunteer site coordinator will orient you to the site and explain the area to be cleaned up. When the stream cleanup is over, please bring your trash bags to the designated drop off location.

**Site
Descriptions**

Dear Stream Cleanup Participant,

Thank you for signing up to participate in our stream cleanup on Saturday, April 13, 2019 from 9:00AM-12:00PM!

In this document you will find details for each site including the general location, approximate address, GPS Coordinates, parking area, special notes about the site, trash drop off location and driving directions. The site descriptions are organized by site number. Please note, that some sites include multiple areas for removing trash. On the day of the cleanup, please sign in at the designated meeting location first and the volunteer site coordinator will assign you to a specific area to pick up litter and provide you with your stream cleanup supplies.

This document was put together in January 2019. Site details may be subject to change in the weeks leading up to the stream cleanup. Please double check the Stream Cleanup website and map (<http://arcg.is/2jsDWNz>) to confirm that the site descriptions in this manual are still accurate and be on the alert for emails from your site coordinator during the week before your event.

Reminders

What to Bring

You are encouraged to bring your own reusable water bottle. Raritan Headwaters will provide trash bags, gloves, water and snacks! If you register after March 26th please come prepared with your own gloves and trash bags.

What to Wear

This event is rain or shine, dress accordingly. No one is required to get into the stream. If you choose to pick up litter on land wear a hat, sturdy boots or shoes, and long-sleeved shirts and pants for tick protection. Stream depth varies across our stream cleanup sites and changes with the weather so if you plan on getting in the stream come prepared with rubber boots or waders.

Logistics

On the morning of the cleanup, you will be greeted by your Site Coordinator at the designated meeting location. The site coordinator will have you sign-in and provide you with your trash bags, gloves, water, and snacks. The Site Coordinator will orient you to the site and explain the area to be cleaned up. When the stream cleanup is over, please bring your trash bags to the designated drop off location.

Kids are welcome to participate in this service project, but please keep a close eye on your children throughout the event because their safety is paramount.

Data Collection

Raritan Headwaters is asking volunteers to collect data on the number of plastic bags and bottles they clean up.

Social Media

On the day of the event, please submit pictures and videos on Facebook to RHA's [Stream Cleanup Group Page](#). Use #CleanStreams, #rivercleanup, #RHASTREAMCLEANUP, #conservationinaction. Tag friends and post to Instagram, be sure to tag Raritan Headwaters @raritanheadwaters. Twitter users please mention @RaritanHWaters.

Thank you so much taking the time to protect our local streams! I hope you have a great day!

Best,



Jeff Geist
Stream Cleanup Coordinator

Table of Contents

Site 1: Califon Island Park – Califon Borough – Hunterdon County5

Site 2: Ken Lockwood Gorge – Lebanon Township – Hunterdon County6

Site 3: Union Forge Park – High Bridge Borough – Hunterdon County7

Site 4: Round Valley Reservoir – Clinton Township – Hunterdon County8

Site 5: School Street Park – Glen Gardner Borough – Hunterdon County9

Site 6: Spruce Run Reservoir – Clinton Township – Hunterdon County10

Site 7: Red Mill & Beaver Brook – Town of Clinton – Hunterdon County11

 Site 7a: South Branch Raritan River off of Main Street near Red Mill.11

 Site 7b: Beaver Brook off of Leigh Street in Clinton.11

 Site 7c: South Branch Raritan River behind Walmart11

Site 9: Capoolong Creek Wildlife Management Area – Pittstown – Hunterdon County12

Site 10: Hamden Road – Clinton Township – Hunterdon County13

Site 11: Tempe Wick Preserve – Mendham Township – Morris County14

Site 12: Liberty Village – Flemington Borough – Hunterdon County15

Site 13: Darts Mill – Raritan Township – Hunterdon County17

 Site 13a: Darts Mill – Raritan Township – Hunterdon County17

 Site 13b: Assiscong Marsh – Raritan Township – Hunterdon County17

Site 14: Three Bridges & Rockafellows Mill Road – Readington & Raritan Townships – Hunterdon County19

 Site 14a: Three Bridges – Readington Township - Hunterdon County19

 Site 14b: Rockafellows Mill Road – Raritan & Readington Townships - Hunterdon County20

 Site 14c: Higginsville Bridge – Readington & Hillsborough Townships –Hunterdon County20

Site 16: Neshanic Station – Flea Market – Branchburg Township – Somerset County22

 Site 16a: Neshanic Station – Flea Market – Branchburg Township - Somerset County22

 Site 16b: Neshanic Station – Black Point Bridge – Branchburg Township – Somerset County23

 Site 16c: Neshanic Station – Route 567 Bridge – Branchburg Township – Somerset County24

Site 17: Kingwood Boat Launch and Park – Kingwood Township – Hunterdon County25

Site 18: Confluence – Old York Road – Branchburg Township – Somerset County26

Site 19: YMCA Camp Carr – Clinton Township – Hunterdon County27

Site 20: Columbia Trail – Washington Township – Morris County28

Site 21: Old YMCA Dam – Mount Olive Township – Morris County29

Site 22: River Road Park – Bedminster Township – Somerset County30

 Site 22a: River Road Park – Bedminster Township – Somerset County30

 Site 22b: Burnt Mills Park – Bedminster Township – Somerset County30

 Site 22c: Miller Lane Park – Bedminster Township – Somerset County31

Site 23: Far Hills Fairgrounds – Far Hills – Somerset County32

Site 24: Tiger Brook – Chester Township – Morris County33

Site 25: Peapack Brook – Peapack-Gladstone Borough – Somerset County34

Site 26: Raritan Valley Community College – Branchburg – Somerset County35

Site 27: Riverwalk Greenway – Borough of Somerville – Somerset County36

Site 28: Black River Park – Succasunna (Roxbury Township) – Morris County37

Site 29: Park and Ride Access Road – Tewksbury Township – Hunterdon County38

Site 30: Mendham Mudhole – Mendham Borough – Morris County39

Site 31: Rockabye Meadow – Peapack-Gladstone – Somerset County40

Site 32: Claremont Park – Bernardsville – Somerset County41

Site 33: Third Neshanic River Tributary along Dunkard Church Road – Delaware Township – Hunterdon County42

Site 34: West Morris Greenway – Randolph Township/Roxbury Township – Morris County43

 Site 34a: West Morris Greenway – Randolph Township/Roxbury Township – Morris County43

 Site 34b: Midland Park – Roxbury Township – Morris County43

Site 35: Darby Tract – Bridgewater Township – Somerset County45

Site 36: Mine Hill Beach – Mine Hill Township – Morris County46

Site 37: The Valley – Mendham Township – Morris County48

Site 38: North Branch Reformed Church – Bridgewater Township – Somerset County49



Site 39: Studdiford Drive & Opie Road Bridges – Hillsborough – Somerset County50
Site 40: Heritage Park – Bethlehem Township - Hunterdon County51
Site 41: The Commons at Lebanon - Lebanon Borough - Hunterdon County52
Site 42: Municipal Park - Alexandria Township - Hunterdon County53
Site 43: Union Cemetery - Washington Township – Morris County54
Site 44: Basilone Park – Raritan Borough – Somerset County55
Site 45: Hampton Borough Park – Hampton Borough – Hunterdon County56
Site 46: Towpath – Frenchtown – Hunterdon County57
Site 47: “The Meadows” – Highland Park Borough – Middlesex County58
Site 48: St. Matthias School – Franklin Township – Somerset County59
Site 49: Hunterdon Central Regional High School – Flemington Borough – Hunterdon County60

Site 1: Califon Island Park – Califon Borough – Hunterdon County

- **Location:** South Branch Raritan River at Califon Island Park off of Bank St.
Approximate Address: 135 Bank Street, Califon, NJ 07830
GPS Coordinates: 40.722897, -74.835396
- **Parking:** Parking lot at Califon Island Park.
- **Special Note:** Areas to pick up trash: Califon Island Park along river, walk up and down Vernoy Road along River, First Street, Bank Street, River Road, Cokesbury Road, Route 513, along Frog Hollow Brook, and at fishing access area about 1 mile upstream from Califon Island Park. Can also clean along Main Street between Philhower and Academy Street, where a stream runs next to the street, and up Cokesbury Road.
- **Trash Drop Off Location:** Parking lot near trash cans at Califon Island Park.
- **Driving Directions:**
 1. Take I-78 then merge onto US-22 via Exit 18 toward Annadale/Lebanon.
 2. After 1.1 miles, turn left onto Petticoat Lane and continue for 2.9 miles.
 3. Take a slight right onto Cokesbury Road, and after 0.6 miles take the 1st left onto Cokesbury Road/Califon-Cokesbury Road/Cokesbury Califon Road. Continue to follow this road for 3 miles (*Califon-Cokesbury Road becomes Main Street*).
 4. Turn right onto Bank Street (right before the bridge).
 5. Califon Island Park will be 1/4 mile on your left.

Site 2: Ken Lockwood Gorge – Lebanon Township – Hunterdon County

- **Location:** South Branch Raritan River at Ken Lockwood Gorge off of Raritan River Road.
Approximate address: 37 Hoffman's Crossing Road, Califon, NJ
GPS Coordinates: 40.699711, -74.866279
- **Meeting Location & Parking:** At the parking lot next to the Hunterdon County Educational Services Commission building.
- **Special Note:** Areas to pick up trash: A) Walk entire length of Gorge and along River Road.
B) Walk the Columbia Trail
- **Trash Drop Off Location:** A) Intersection of Hoffman's Crossing Road and River Road at the gravel pull off. B) At gates south of the trestle bridge.
- **Driving Directions:**
 1. From High Bridge-Califon Road (County Road 513), turn onto Hoffman Crossing Road for 0.7 mile.
 2. Turn right onto Lockheed Road and your destination will be on the left in 0.1 mile.

Site 3: Union Forge Park – High Bridge Borough – Hunterdon County

- **Location:** South Branch Raritan River at Union Forge Park off of Washington Avenue
Approximate Address: 12 Washington Avenue, High Bridge, NJ 08829
GPS Coordinates: 40.666382, -74.892983
- **Parking:** Parking lot at Union Forge Park.
- **Special Note:** Areas to pick up trash: Pick up in Union Forge Park, along the river, and along Washington Avenue.
- **Trash Drop Off Location:** Place trash in the parking lot, next to the porta Johns, in the vicinity of the old dumpsters.
- **Driving Directions:**
 1. Take 31 North towards Clinton.
 2. Take a slight right towards County Road 513 to West Main Street.
 3. Immediately after, take a right onto County Road 513/West Main Street.
 4. After 0.9 mile, turn right onto Arch Street and continue for 0.4 mile.
 5. Take a left onto Washington Avenue, and Union Forge Park will be on your right in 0.1 mile.

Site 4: Round Valley Reservoir – Clinton Township – Hunterdon County

- **Location:** Round Valley Reservoir off of Route 22.
Approximate Address: 1298 Stanton-Lebanon Road, Lebanon, NJ 08833
GPS Coordinates: 40.631617, -74.850126
 - **Parking:** Parking lot at Round Valley Reservoir Boat Launch.
 - **Special Note:** Areas to pick up trash: Start at boat launch shoreline and cove and adjacent parking lot. If there are additional volunteers, supervised groups will be sent to swimming area and ranger's cove.
 - **Trash Drop Off Location:** Trash will be left in the boat launch parking lot and in the dumpsters in the parking area near the swimming area and ranger's cove. RHA will contact Park Superintendent to organize trash removal.
 - **Driving Directions:**
 1. Take I-78 East towards Annandale. Take exit 18 for US-22 East towards Annandale/Lebanon.
 2. After 0.7 mile, take a slight right onto US-22 East.
 3. Continue for 1.0 mile, then turn right onto Round Valley Access Road.
 4. Take 1st left onto County Road 629, then an immediate right making sure to follow sign pointing towards boat launch.
- OR
1. Take I-78 West towards Annandale. Take exit 20A toward Lebanon.
 2. Merge onto Cokesbury Road, and go straight across the light.
 3. After 0.3 mile, turn right onto US-22 West.
 4. Continue for 0.8 mile and then turn right onto Round Valley Access Road.
 5. Take 1st left onto County Road 629, then an immediate right making sure to follow sign pointing towards boat launch.

Site 5: School Street Park – Glen Gardner Borough – Hunterdon County

- **Location:** Spruce Run at School Street Park (Borough of Glen Gardner Veterans Memorial Park) off of School Street.
Approximate Address: 2 School St, Glen Gardner, NJ 08826
GPS Coordinates: 40.701106, -74.944096
- **Parking:** Parking lot at School Street Park.
- **Special Note:** Areas to pick up trash: School Street Park, along river through town, along Route 31 between School Street and Sanatorium Road, along Main Street and Hunt Place near bridge, and along School Street.
- **Trash Drop Off Location:** Next to road at School Street Park.
- **Driving Directions:**
 1. Take 31 North towards Glen Gardner.
 2. Turn right onto School Street.
 3. Immediately on the right will be School Street Park.

OR

1. Take 31 South towards Glen Gardner.
2. Turn left onto School Street.
3. Immediately on the right will be School Street Park.

Site 6: Spruce Run Reservoir – Clinton Township – Hunterdon County

- **Location:** Spruce Run Reservoir off of Van Syckles Road.
Approximate address: 4 Van Syckles Road, Clinton, NJ 08809
GPS Coordinates: 40.673540, -74.917542
- **Meeting Location/Parking:** Parking in the main Beach Area Parking Lot of Spruce Run Park and meet at the flag poles. Look for the site sign with balloons.
- **Special Note:** On the day of the cleanup volunteers will be assigned to an area. Areas to pick up trash may include: A) Central Parking Lot B) Designated Shoreline C) Access Roads D) Picnic Area 1 E) Picnic Area 2 F) Boat rental Area
- **Trash Drop Off Location:** The Site Coordinator will inform you of the trash drop off location on the morning of the event.
- **Driving Directions:**
 1. From Route 31, turn westward onto Van Syckles Road (see RHA Sign with balloon) for 1.2 miles.
 2. Turn left into the main gate (see RHA Sign with balloon) at Spruce Run Reservoir and drive for 1 mile towards the main Beach Area Parking Lot with the flag poles (see RHA Sign with balloon) across from the beach area.

Site 7: Red Mill & Beaver Brook – Town of Clinton – Hunterdon County

- **Location:** South Branch Raritan River off of Main Street near Red Mill and Beaver Brook off of Leigh Street in Clinton.
Approximate Address: 56 Main St, Clinton, NJ 08809
GPS Coordinates: 40.635783, -74.912278
- **Parking:** Parking is along Main St, in municipal parking lot on lower Center St, and in the municipal lot behind the municipal building at 42 Leigh Street.
- **Meeting Location:** Volunteers will meet at the Main Street bridge near the Red Mill to register, pick up supplies and be assigned a location to cleanup:

Site 7a: South Branch Raritan River off of Main Street near Red Mill.

Areas to pick up trash: Along the river, in parking lots, along Main Street, along Halstead Street and in the cemetery by the river, north to Route 31.

Site 7b: Beaver Brook off of Leigh Street in Clinton.

Areas to pick up trash: along the brook, in parking lots, along Leigh Street, in Union Cemetery, and downhill from Clinton Public School.

Site 7c: South Branch Raritan River behind Walmart

Areas to pick up trash: Around the Landsdowne trail near the Sewage Treatment Plant.

- **Trash Drop Off Location:**
Locations 1 & 2: On the South side of Old Route 22, just East of the South Branch River Bridge and just west of Krausers.

Location 3: At the parking area to access the South Branch Raritan River and Landsdowne Trail on Ramsey Road.
- **Driving Directions:**
 1. From I-78, take exit 15 and merge onto NJ-173 East/West Main Street for 0.4 mile.
 2. Turn left (at Clinton House) to stay on West Main Street.
 3. Destination will be on the right in 128 feet, just before the Main Street bridge. The Red Mill is straight ahead.

OR

1. From Route 31, take the Clinton/Flemington exit towards NJ-173 West/Old Highway 22 toward Center Street for 1.0 mile.
2. Turn right onto West Main Street for 135 feet. The Red Mill is straight ahead.

Site 9: Capoolong Creek Wildlife Management Area – Pittstown – Hunterdon County

- **Location:** The Capoolong Creek off of Upper Kingtown Road
Approximate Address: 7 Upper Kingtown Rd, Pittstown, NJ 08867
GPS Coordinates: 40.593411, -74.944171
- **Parking/Meeting Location:** In the gravel parking lot at the intersection of Kingtown Road/Upper Kingtown Road and Lower Kingtown Road.
- **Special Note:** On the day of the cleanup, the group can be split into two. One group can follow the trail northeast towards Lower Landsdown Road. A second group can walk southwest towards Pittstown Road.
- **Trash Drop Off Location:** At the parking area to access Capoolong Creek Trailhead, the gravel parking lot at Sydney Road, and the gravel parking lot at Lower Landsdown Road.
- **Driving Directions:**
 1. From I-78, take exit 15 toward Clinton/Pittstown
 2. Turn left onto Pittstown Road (County Road 513) for about 3 miles.
 3. Turn left onto Kingtown Road and your destination will be on the right in 0.1 mile.

Site 10: Hamden Road – Clinton Township – Hunterdon County

- **Special Note: Special Note:** Registration is full. Please register for an alternate stream cleanup site.

Site 11: Tempe Wick Preserve– Mendham Township – Morris County

- **Location:** Headwaters of the Passaic River off of Tempe Wick Road
Approximate Address: 20 Tempe Wick Road, Mendham, NJ 07945
GPS Coordinates: 40.776977, -74.579000
- **Parking/Meeting Location:** In the gravel parking lot off of Tempe Wick Road across from Walsingham Road.
- **Special Note:** Areas to pick up trash: Tempe Wick Road in both directions from Cold Hill Road to and including the Buck Hill Open Space Preserve. The Clean Up will require the team to be on Tempe Wick Road so a visible vest should be worn and all precautions should be observed.
- **Trash Drop Off Location:** At the parking lots for Tempe Wick Preserve and the Buck Hill Open Space Preserve.
- **Driving Directions:**
 1. From I-287, take exit 30B toward US-202/Bernardsville for 0.2 mile.
 2. Merge onto North Maple Avenue.
 3. Turn right onto US-202 North for 1.8 miles.
 4. Turn left onto Tempe Wick Road and destination will be on the left in 3.6 miles. Special Note: Registration is full. Please register for an alternate stream cleanup site.

Site 12: Liberty Village – Flemington Borough – Hunterdon County

- **Location:** Walnut Brook off of Route 12 at the Liberty Village Outlets overflow parking lot by the water. Also in Mine Brook Park, Morales Nature Preserve, and Uplands Reserve.
Approximate Address: 81 Route 12, Flemington, NJ 08822
GPS Coordinates: 40.502448, -74.865367
- **Meeting Location & Parking:** Parking is in the overflow parking lot of the Liberty Village Outlets near Walnut Brook, which runs under Route 12.
- **Special Note:** Areas to pick up trash: A) First along the Walnut Brook near overflow parking for the Liberty Village outlets, on the other side of the Route 12 bridge. Trash can also be found around perimeter of the lot. B) Second along Walnut Brook in Mine Brook Park and Morales Nature Preserve off of Old Croton Road and Capner Street. Can also check along Walnut Brook in the Uplands Reserve off of Old Croton and Barton Hollow Roads.
- **Trash Drop Off Location:** Along the road at the Route 12 bridge over Walnut Brook (right before Borough of Flemington sign). Also at Mine Brook Park parking lot next to Old Croton Road.
- **Driving Directions:**
 - A) Liberty Village:
 1. Take US-202/Rt-31 towards Flemington then turn onto Reaville Avenue.
 2. Enter roundabout towards Rt-12 West after 0.2 mile.
 3. Take exit Rt-12 West/Parker Road.
 4. Turn right into overflow parking lot at Liberty Village right off Route 12.
 - B) After cleaning up in the Liberty Village area, volunteers will shuttle to a second location at Mine Brook Park:
 1. From A) step 4, continue on Route 12 and enter roundabout Route 12.
 2. Take 2nd exit onto Route 12 West/Frenchtown Flemington Road.
 3. Take first right onto Old Croton Road.
 4. Turn right into Mine Brook Park parking lot after 0.3 mile.

Approximate Address: 18 Old Croton Road, Flemington, NJ
GPS Coordinates: 40.509786, -74.873886
 - C) After cleaning up the Liberty Village area, volunteers will shuttle to a third location at the Townsends Housing Association:
 1. From A) step 4, take NJ-12 West/Frenchtown-Flemington Rd for 0.3 mile.
 2. At the traffic circle, take the first exit onto Mine Street for 0.6 mile.
 3. Turn left onto Park Avenue for 0.5 mile.
 4. Continue straight onto Park Avenue/Walter E Foran Boulevard Extension for 295 feet.

5. Continue onto Walter E Foran Boulevard for 0.2 mile.
6. Turn left onto Wooded Valley Way for 0.2 mile. Your destination will be on the left
7. Wooded Valley Way Flemington, NJ 08822

Approximate Address: Near 32 Stratton Court, Flemington, NJ 08822

GPS Coordinates: 40.520459, -74.861254

Site 13: Darts Mill – Raritan Township – Hunterdon County

- **Location:** South Branch Raritan River off of Route 523 near Old Lipton Plant. Assiscong Marsh off of River Road in the South Branch Reservation.
Approximate Address: 1200 County Road 523, Flemington, NJ 08822
GPS Coordinates: 40.537954, -74.838454
- **Meeting Location & Parking:** Parking is in the large dirt parking area off of 523 North on the left near the river, across from the Lipton Plant.
- **Special Note:** Volunteers will meet in the parking area off of 523 North to register, pick up supplies and be assigned a location to cleanup:

Site 13a: Darts Mill – Raritan Township – Hunterdon County

- **Location:** South Branch Raritan River off of Route 523 near Old Lipton Plant.
- **Special Note:** Areas to pick up trash: Along Route 523 and along the South Branch Raritan River across from the Old Lipton Plant (from the bridge over the river to River Road). Trash can also be removed from Darts Mill Road.
- **Driving Directions:**
 1. Take Route 31 towards Flemington and turn onto Bartles Corner Road (*Bartles Corner Road turns into 523*). Continue for 1.1 mile.
 2. Turn left into dirt parking area next to the river, across the street from the Old Lipton Factory.
- **Trash Drop Off Location:** Along Route 523 at the large dirt parking area next to the river across from the old Lipton Tea Plant.

Site 13b: Assiscong Marsh – Raritan Township – Hunterdon County

- **Location:** South Branch Raritan River along River Road
- **Parking:** In the Assiscong Marsh section parking lot of the South Branch Reservation.
- **Special Note:** Areas to pick up trash: The marsh, Reservation trails, along River Road, and along railroad tracks.
- **Driving Directions:**
 1. Take Route 31 towards Flemington and turn onto Bartles Corner Road.
 2. Take first left onto River Road. Gravel parking lot is about 0.2 mile down the road
Approximate Address: 148 River Road, Flemington, NJ

GPS Coordinates: 40.539909, -74.847246

- **Trash Drop Off Location:** For the marsh, leave trash in the Assiscong Marsh parking lot near the edge of River Road.

Site 14: Three Bridges & Rockafellows Mill Road – Readington & Raritan Townships – Hunterdon County

- **Location:** South Branch Raritan River at the bridge off of Main Street (Route 613) in Three Bridges and South Branch Raritan River off of River Road in Raritan/Readington Townships.
- **Meeting Location & Parking:** Park in dirt pull-off near the bridge and along both sides of Main Street (Route 613).
- **Special Note:** Volunteers will meet at the Main Street Park to register, pick up supplies and be assigned a location to cleanup.

Site 14a: Three Bridges – Readington Township - Hunterdon County

- **Location:** South Branch Raritan River at the bridge off of Main Street (Route 613) in Three Bridges
Approximate Address: 409 Main Street, Three Bridges, NJ 08887
GPS Coordinates: 40.517437, -74.801531
- **Special Note:** Areas to pick up trash: along the river in both directions, in parking areas, along Main Street (Route 613), throughout the South Branch Reservation area, and under the bridge.
- **Trash Drop Off Location:** On the grassy area at the edge of the dirt pull-off near the bridge.
- **Driving Directions:**
 1. Take US-202 North.
 2. Turn right onto Dory Dilts Road.
 3. Continue on Dory Dilts Road for 1 mile, then turn left onto Old York Road (Old York Road becomes Main Street).
 4. Continue for a little over a 0.5 mile to the parking area near the bridge.

OR

1. Take US-202 South towards Flemington.
2. Take a slight right towards River Avenue and then take 1st left onto River Avenue.
3. Turn right onto Main Street, and the site will be about 0.5 mile up the road over the train tracks near the bridge.

Site 14b: Rockafellows Mill Road – Raritan & Readington Townships - Hunterdon County

- **Location:** South Branch Raritan River off of River Road.
Approximate Address: 191 Rockafellows Mill Road, Flemington, NJ
GPS Coordinates: 40.520618, -74.820542
- **Parking:** Parking is along Rockafellows Mill Road.
- **Special Note:** Areas to pick up trash: along the river and River Road from Rockafellows Mill Road to the corner junction of River Road and Pennsylvania Avenue. Also, further north along River Road up to the old railroad bridge.
- **Trash Drop Off Location:** The corner junction of River Road and Pennsylvania Avenue at the dirt pull off near the river.
- **Driving Directions:**
 1. Take US-202 South towards Flemington.
 2. Turn right onto River Road, right after Northlandz.
 3. Turn right onto Rockafellows Mill Road after 0.3 mile.

OR

1. Take 31 North/US-202 North towards Flemington.
2. Turn right onto Dory Dilts Road (via jughandle on the right).
3. Turn right onto Rockafellows Mill Road after 0.3 mile.

Site 14c: Higginsville Bridge – Readington & Hillsborough Townships –Hunterdon County

- **Location:** South Branch Raritan River at the Higginsville Road bridge
Approximate Address: 1 Higginsville Road, Hillsborough Township, NJ 08844
GPS Coordinate: 40.509827, -74.784453
- **Parking:** There is a tiny gravel lot on the right handside of the road
- **Special Note:** Areas to pick up trash: Upstream and downstream of the bridge on both banks of the river.
- **Trash Pick Up Location:** At the gravel parking lot.
- **Driving Directions:**
 1. Take Route 202 North from Flemington area.
 2. Turn right onto Dory Dilts Road for 0.9 mile.
 3. Turn left onto Old York Road for 0.5 mile.

4. Turn right onto Hillsborough Road for 0.3 mile.
5. Continue onto 3 Bridges Road for 0.7 mile.
6. Slight left to stay on 3 Bridges Rd for 0.1 mile.
7. Continue onto Higginsville Road.
8. Destination will be on the left in 302 feet.

Site 16: Neshanic Station – Flea Market – Branchburg Township – Somerset County

- **Location:** South Branch Raritan River at the bridge off of Elm Street (Route 667) in Neshanic Station by the Flea Market.
Approximate Address: 100 Elm Street, Neshanic Station, NJ 08853
GPS Location: 40.509182, -74.727716
- **Meeting Location & Parking:** Park in driveway to main house at Neshanic Flea Market at 100 Elm Street (Route 667).
- **Special Note:** Volunteers will meet at the park across from 100 Elm Street to register, pick up supplies and be assigned a location to cleanup. Please do not park in the lot near the river. Please check out with your site coordinator at the end of the event.

Site 16a: Neshanic Station – Flea Market – Branchburg Township - Somerset County

- **Location:** South Branch Raritan River at the bridge off of Elm Street (Route 667) in Neshanic Station by the Flea Market.
- **Special Note:** Areas to pick up trash: Along the river in both directions, in parking areas, along Elm Street (Route 667), and under and on the bridge.
- **Trash Drop Off Location:** In dirt pull-off near bridge on the side heading towards town.
- **Driving Directions:**
 1. Take 202 North towards Three Bridges.
 2. Turn right onto County Road 629/Pleasant Run Road and continue on to Pleasant Run Road for 2.2 miles.
 3. Continue onto County Route 567/River Road for 0.7 mile.
 4. Turn right onto Elm Street and park in the driveway to the main house on the flea market property at 100 Elm Street.

Site 16b: Neshanic Station – Black Point Bridge – Branchburg Township – Somerset County

- **Location:** South Branch Raritan River at the bridge over the South Branch of the Raritan River on Black Point Road in Neshanic Station.
- **Parking:** Park in dirt pull-off parking area near the bridge
- **Special Note:** Areas to pick up trash: along the river in both directions, in parking areas, along Black Point Road, and under and on the bridge.
- **Trash Drop Off Location:** Next to the road by dirt pull-off near bridge.
- **Driving Directions:**
 1. Take 202 North towards Three Bridges.
 2. Turn right onto County Road 629/Pleasant Run Road and continue on to Pleasant Run Road for 2.2 miles.
 3. Continue onto County Route 567/River Road for 0.7 mile.
 4. Turn right onto Elm Street.
 5. Take the first left turn onto Main Street (by the Neshanic Station Post Office). Main Street turns right and becomes Woodfern Road.
 6. After 0.7 mile on Woodfern Road, turn left onto Blackpoint Road and pull off on the left hand side of the road, just before the bridge (dirt parking area).

Approximate Address: 426 Blackpoint Road, Hillsborough Township, NJ
GPS Location: 40.502314, -74.742351

Site 16c: Neshanic Station – Route 567 Bridge – Branchburg Township – Somerset County

- **Location:** South Branch Raritan River at the concrete bridge on Route 567 in Neshanic Station downstream of the Elm Street Bridge.
- **Parking:** Park along both sides of Route 567.
- **Special Note:** Areas to pick up trash: along the river in both directions, along Route 567, and under and on the bridge.
- **Trash Drop Off Location:** Next to the road in one pile at the end of one of the guard rails. Across the street from the house.
- **Driving Directions:**
 1. Take US-202 North towards Three Bridges.
 2. Turn right onto County Road 629/Pleasant Run Road and continue on to Pleasant Run Road for 2.2 miles.
 3. Continue onto County Route 567/River Road. Site will be in 0.2 mile as you approach a plain looking concrete bridge over the South Branch Raritan River.

Approximate Address: 1107 County Route 567, Hillsborough Township, NJ
GPS Coordinates: 40.515496,-74.72939

**Site 17: Kingwood Boat Launch and Park – Kingwood Township –
Hunterdon County**

- **Special Note: Special Note:** Registration is full. Please register for an alternate stream cleanup site.

Site 18: Confluence – Old York Road – Branchburg Township – Somerset County

- **Location:** South Branch Raritan River at the bridge off of Old York Road (Route 637/567) in Branchburg.
Approximate Address: 500 Old York Road, Branchburg, NJ 08876
GPS Coordinates: 40.556667, -74.689183
- **Meeting & Parking Location:** Park in the dirt pull-off near the bridge and along both sides of Old York Road (Route 567/637).
- **Special Note:** Areas to pick up trash: A) Along the river in both directions, in parking areas, along Old York Road (Route 637/567), and under and on the bridge. B) Additional location for trash pickup at entrance to Duke Island Park bike path (40.5528, -74.6829). A sign for Sellars Maintenance Facility just east of the river on Old York Road marks the road leading to the dirt parking area and entrance to the bike path.
- **Trash Drop Off Location:** In dirt pull-off near the bridge on the side heading towards Route 202.
- **Driving Directions:**
 1. From Route 202 in Branchburg, turn onto Old York Road towards South Branch Road.
 2. Destination will be on the right in 0.7 mile. Just before the bridge over the river, you will see a dirt pull off parking area on the right.

Site 19: YMCA Camp Carr – Clinton Township – Hunterdon County

- **Location:** South Branch Raritan River at Camp Carr and the South Branch Reservation
Approximate Address: 515 Hamden Road, Annandale, NJ 08801
GPS Coordinates: 40.599044, -74.903063
- **Meeting Location & Parking:** Park by the pool area off of Camp Buck Road.
- **Special Note:** The stream cleanup site will begin at 10 am. Volunteers will meet up near the pool area to register, pick up supplies and be assigned a location to cleanup. Areas to pick up trash: A) YMCA Camp B) Camp Buck Road C) Pine Hill Road D) Take the trail from the Pine Hill Section north towards the railroad tracks and Hamden Road/River Road
- **Trash Drop Off Location:** Trash can be dropped at the pool parking area.
- **Driving Directions:**
 1. From Route 31 South, turn Right onto Allerton Road for 0.6 mile.
 2. Turn left onto Lilac Drive for 0.4 mile.
 3. Turn right onto River Road for 0.5 mile.
 4. Turn left onto Hamden Road for 0.3 mile.
 5. Turn right onto Camp Buck Road. Parking will be on the left in 312 feet.

OR

 1. From Route 31 North, make a slight right onto Payne Road for 341 feet.
 2. Turn left onto Payne Road for 0.6 mile.
 3. Turn right onto Lilac Drive for 0.8 mile.
 4. Turn left onto River Road for 0.5 mile.
 5. Turn left onto Hamden Road for 0.3 mile.
 6. Turn right onto Camp Buck Road and parking will be on the left in 312 feet.

Site 20: Columbia Trail – Washington Township – Morris County

- **Special Note:** Registration is full. Please register for an alternate stream cleanup site.

Site 21: Old YMCA Dam – Mount Olive Township – Morris County

- **Special Note:** Registration is full. Please register for an alternate stream cleanup site.

Site 22: River Road Park – Bedminster Township – Somerset County

- **Location:** North Branch Raritan River at River Road park at the corner of River Road and Routes 202/206
Approximate Address: 3055 River Road, Bedminster Township, NJ 07921
GPS Coordinates: 40.662705, -74.646731
- **Meeting Location & Parking:** Park in the gravel parking lot that is next to the baseball diamond and soccer fields.
- **Special Note:** Volunteers will meet at River Road Park to register, pick up supplies and be assigned a location to cleanup

Site 22a: River Road Park – Bedminster Township – Somerset County

- **Location:** North Branch Raritan River at River Road park at the corner of River Road and Routes 202/206
- **Special Note:** Areas to pick up trash: A) Around the recreational fields B) Along the trail in the floodplain of the North Branch Raritan River C) Stahl Natural Area
- **Driving Directions to River Road Park:**
 1. From I-287 South, take the exit toward River Road for 0.2 mile.
 2. Merge onto AT&T Way for 282 feet.
 3. Make a slight right toward River Road for 387 feet.
 4. Make a slight right onto River Road for 164 feet.
 5. Turn right into the entrance for River Road Park in 453 feet. Parking will be in the gravel parking lot on the right.
- **Trash Drop Off Location:** Drop the bags of trash near the entrance to the gravel parking lot at the tree lined edge, away from the playing fields.

Site 22b: Burnt Mills Preserve – Bedminster Township – Somerset County

- **Location:** Lamington River at Burnt Mills Preserve at the intersection of Milnor Road and Cowperthwaite Road
Approximate Address: 25 Cowperthwaite Road, Bedminster Township, NJ 07921
GPS Coordinates: 40.634825, -74.686907
- **Special Note:** Areas to pick up trash: A) Along the floodplain paralleling Milnor Road

- **Driving Directions to Burnt Mills Preserve:**
 1. From River Road Park, turn right onto River Road for 2.6 miles.
 2. Turn left onto Cowperthwaite Road for 0.8 mile.
 3. The gravel pull off will be on the right.
- **Trash Drop Off Location:** Drop the bags of trash in the gravel parking lot near the intersection with Milnor Road and Cowperthwaite Road.

Site 22c: Miller Lane Park – Bedminster Township – Somerset County

- **Special Note:** Registration is full. Please register for an alternate stream cleanup site.

Site 23: Far Hills Fairgrounds – Far Hills – Somerset County

- **Location:** North Branch Raritan River behind the Far Hills Fairgrounds and the Helen Woodman Natural Area trail off of Peapack Road. The entrance to the Helen Woodman Natural Area is about a hundred yards along the river trail maintained by Far Hills, where you will see a “Helen Woodman Natural Area” sign at the beginning of Raritan Headwaters’ property.
Approximate Address: 17 Peapack Road, Far Hills, NJ
GPS Coordinates: 40.686033, -74.640583
- **Parking:** Park in the gravel parking lot at the entrance to the Far Hills Fairgrounds or continue to drive straight back along the gravel road to an additional gravel lot on the left near the woods.
- **Special Note:** Areas to pick up trash: around the baseball fields, gravel road and trails that parallel the river.
- **Trash Drop Off Location:** Along Peapack Road (County Road 512) at the entrance to the Far Hills Fairgrounds.
- **Driving Directions:**
 1. From Route 202/Main Street in Far Hills, turn onto Peapack Road (County Road 512) towards De Mun Place for 0.2 mile.
 2. Turn left into the parking lot at the Far Hills Fairgrounds. Meet in the back of the fairgrounds.

Site 24: Tiger Brook – Chester Township – Morris County

- **Special Note:** Registration is full. Please register for an alternate stream cleanup site.

Site 25: Peapack Brook – Peapack-Gladstone Borough – Somerset County

- **Location:** Peapack Brook behind the Gladstone Market, where the stream parallels County Road 512/Main Street.
Approximate Address: 279 Main Street, Gladstone, NJ 07934
GPS Coordinates: 40.722232, -74.667629
- **Meeting Location/Parking:** Park at the parking lot across from the Gladstone Market.
- **Special Note:** Volunteers will split into groups led by environmental commission members to pick up trash at the following locations from the Gladstone Market-
 - 1) a group will head north to the next bridge
 - 2) a group will head south to the Pottersville Road bridge
 - 3) a group will go in at the Pottersville Road bridge and come out at the Gladstone train station
 - 4) a group will go in at the Gladstone train station and come out at the pond
 - 5) a group will clean around the Peapack Train Station (ideal for those without boots since it is difficult to get into the river there)
 - 6) a group will head to 19 Route 206 in Peapack-Gladstone
- **Trash Drop Off Location:** Garbage is hauled to the exit point bridge.
- **Driving Directions:**
 1. From the Route 206 in Gladstone, turn onto Pottersville Road (County Road 512) towards West Avenue for 0.6 mile.
 2. Turn left onto Main Street for 371 feet.
 3. Take the first right onto Dewey Avenue. Destination will be on the left in 69 feet at the parking lot across from the Gladstone Market.

**Site 26: Raritan Valley Community College – Branchburg – Somerset
County**

- **Special Note:** Registration is full. Please register for an alternate stream cleanup site.

Site 27: Riverwalk Greenway – Borough of Somerville – Somerset County

- **Special Note:** Registration is full. Please register for an alternate stream cleanup site.

Site 28: Black River Park – Succasunna (Roxbury Township) – Morris County

- **Location:** Black River Pond with access off of the parking lot on Main Street.
Approximate Address: 1 Main Street, Succasunna, NJ 07876
GPS Location: 40.863452, -74.627448
 - **Parking:** Park in the Black River Park parking lot off of Main Street.
 - **Special Note:** Priority area to pick up trash: Around the parking lot, banks of Black River Pond, and trail system.
 - **Trash Drop Off Location:** Near the entrance of the parking lot on the left.
 - **Driving Directions:**
 1. Take NJ-10 East from Ledgewood and turn left onto North Hillside Avenue for 387 feet.
 2. Take the first right onto Main Street. Destination will be on the left in 0.8 mile.
- OR
1. Take NJ-10 West from Randolph Township and make a slight right onto Main Street.
 2. Destination will be on the right in 394 feet.

Site 29: Park and Ride Access Road – Tewksbury Township – Hunterdon County

- **Location:** Rockaway Creek at the Route 78 East, Exit 24, Park and Ride Access Road.
Approximate Address: 116 Oldwick Rd, Whitehouse Station, NJ 08889
GPS Coordinates: 40.649883, -74.755464
- **Parking:** Parking lot at the Park and Ride Access Road.
- **Special Note:** Areas to pick up trash: Along the Rockaway Creek, surrounding wetlands, parking lot, and County Road 523.
- **Trash Drop Off Location:** At the entrance to the parking lot, on the side opposite the 78 East exit ramp.
- **Driving Directions:**
 1. From I-78 East, take exit 24 for County Road 523 toward Oldwick/Whitehouse/County Road 517 for 0.2 mile.
 2. Turn right to merge onto Oldwick Road for 135 feet.
 3. Turn right into the entrance of the Park and Ride.

Site 30: Mendham Mudhole – Mendham Borough – Morris County

- **Location:** At Mountainview Pond and the North Branch Raritan River off Mountain Avenue and Patriots Path.
Approximate Address: 75 Mountain Ave, Mendham, NJ 07945
GPS Location: 40.785527, -74.607043
- **Parking:** Park in the parking lot off of Mountain Avenue that is adjacent to the Mendham Mudhole.
- **Special Note:** Clean up around the pond and Patriots' Path.
- **Trash Drop Off Location:** Trash can be left in the parking lot.
- **Driving Directions:**
 1. From Route 206, take Main Street in Chester Borough for 1.0 mile.
 2. Turn right onto County Road 510 for 4.8 miles. Keep an eye out for the Black Horse Inn and a traffic light as the landmarks for the Mountain Road intersection.
 3. Turn left onto Mountain Avenue for 0.7 mile. Your destination will be on the right.

Site 31: Rockabye Meadow – Peapack-Gladstone – Somerset County

- **Special Note:** Registration is full. Please register for an alternate stream cleanup site.

Site 32: Claremont Park – Bernardsville – Somerset County

- **Location:** Mine Brook at Bernardsville Boro Hall at Route 202.
Approximate Address: 166 Mine Brook Road, Bernardsville, NJ 07924
GPS Location: 40.714514, -74.576431
- **Meeting Location & Parking:** The pond at Bernardsville Boro Hall.
- **Special Note:** Areas to cleanup: A) Cleanup around the Mine Brook, parking lot, ball field, and playground. B) Depending on the size of the group, volunteers may be sent to other park locations within Bernardsville.
- **Trash Drop Off Location:** Trash can be left in the parking lot.
- **Driving Directions:**
 1. From downtown Bernardsville (at the intersection with Mount Airy Road), take Route 202 South for 0.5 mile.
 2. Your destination will be on the left.

Site 33: Third Neshanic River Tributary along Dunkard Church Road – Delaware Township – Hunterdon County

- **Location:** Tributary of the Third Neshanic River off of Dunkard Church Road.
Approximate Address: 40 Sandbrook Headquarters Road, Delaware Township, NJ 08559
GPS Location: 40.449005,-74.913583

- **Special Note:** Please meet at the church parking lot at 8:15 am, bus will pick you up and take you to the cleanup area at 8:30 am.

- **Parking:** Park at the Amwell Church of the Brethren

- **Trash Drop Off Location:** At the corner of Dunkard Church Road and Easton Trenton Turnpike (County Rd 579)

- **Driving Directions:**
 1. Take NJ-31 South/US-202 South.
 2. Turn right onto Toad Lane for 0.8 mile.
 3. Continue onto County Road 604/Rosemont Ringoes Road/Sergeantsville Road. Continue to follow County Road 604/Rosemont Ringoes Road for 2.3 mile.
 4. Turn right onto Sandbrook Headquarters Road. Destination will be on the right in 0.6 mile.

OR

 1. Take US-202 North.
 2. Take the NJ-179 South exit toward Ringoes for 0.3 mile.
 3. Merge onto NJ-179 North for 0.8 mile.
 4. Turn left onto Boss Road for 1.5 mile.
 5. Turn left onto County Road 604/Rosemont Ringoes Road for 1.3 mile.
 6. Turn right onto Sandbrook Headquarters Road.
 7. Destination will be on the right.

Site 34: West Morris Greenway – Randolph Township/Roxbury Township – Morris County

- **Location:** Black River at Righter Road along West-Morris Greenway.
Approximate Address: 16 Righter Road, Succusunna, NJ 07876
GPS Location: 40.8526, -74.6370
- **Meeting Location & Parking:** Horseshoe Lake Soccer Fields parking area.
- **Special Note:** The primary cleanup location is the West Morris Greenway, but there is an additional cleanup site nearby at Midland Park.

Site 34a: West Morris Greenway – Randolph Township/Roxbury Township – Morris County

- **Location:** Black River at Righter Road along West-Morris Greenway
- **Special Note:** Follow path from parking area northwest to meet the West-Morris Greenway. Follow Greenway South to Righter Road. Areas to pick up trash: Trash can be found along Righter Road and in Black River under Greenway walking bridge on south side of Righter Road.
- **Trash Drop Off Location:** Trash can be left next to garbage cans by soccer field parking area.
- **Driving Directions:**
 1. From North, take Route 10 East and turn right onto Eyland Avenue for 0.7 mile.
 2. Turn left onto Righter Road for 0.1 mile.
 3. The soccer field lot will be on your left.

OR

1. From South, head northeast on Pleasant Hill Road toward Reger Road.
2. Turn right onto Eyland Avenue for 1.0 mile.
3. Turn right onto Righter Road for 0.1 mile.
4. The soccer field lot will be on your left.

Site 34b: Midland Park – Roxbury Township – Morris County

- **Location:** Succasunna Brook and pond at Midland Park.
Approximate Address: 14 Midland Avenue
GPS Location: 40.8515, -74.6388
- **Parking:** Park at the gravel parking area at the end of Midland Avenue or walk to this site from the meeting location.

- **Special Note:** Areas to cleanup: Gravel parking area at the end of Midland Avenue in Midland Park and clearing near parking area next to the pond.
- **Trash Drop Off Location:** Trash can be left at the Midland Park gravel parking area.

Site 35: Darby Tract – Bridgewater Township – Somerset County

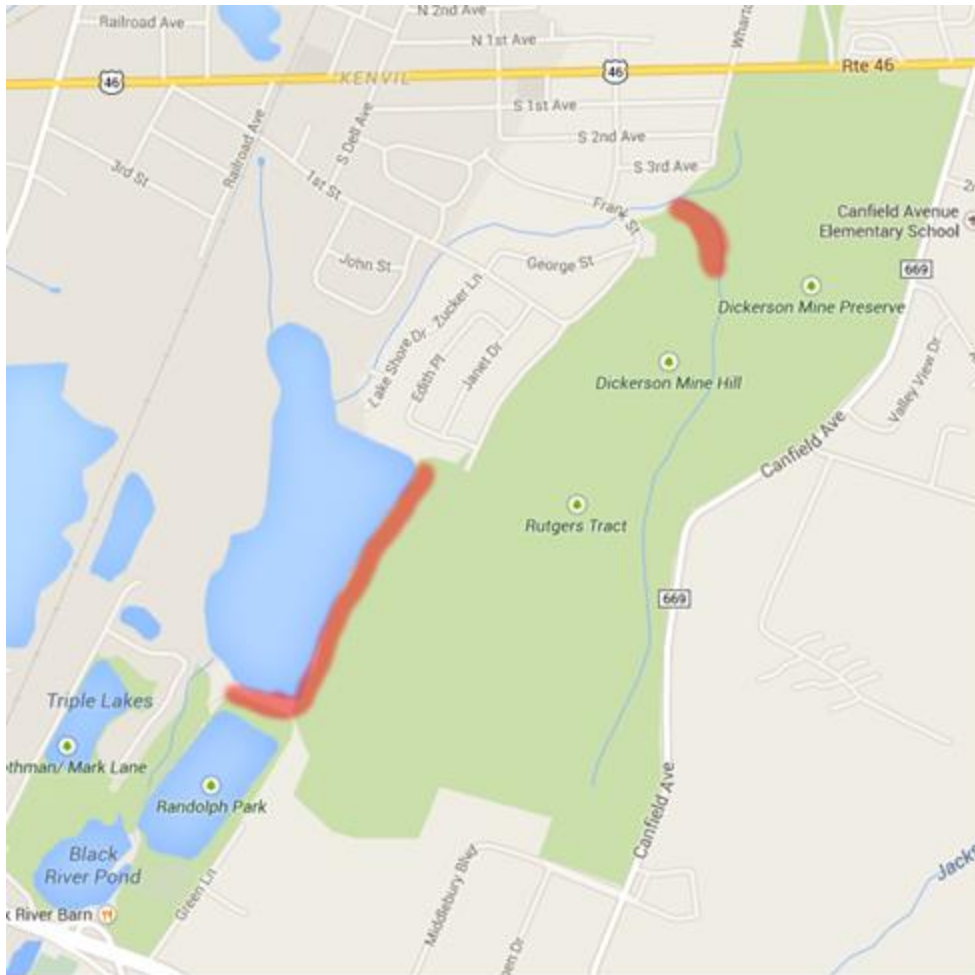
- **Location:** River Brook and Chambers Brook off of Van Holten Road
Approximate Address: 360 Van Holten Rd, Bridgewater, NJ 08807
GPS Location: 40.603813, -74.653353
- **Parking:** Park at the Van Holten School Parking Lot
- **Special Note:** Volunteers will meet in the School parking lot and then cleanup the Darby Tract which is Township Open Space across the street from the school. Participants will clean-up the area along Chambers Brook that bisects the open space.
- **Trash Drop Off Location:** Trash bags will be left at the entrance to the open space parcel.
- **Driving Directions:**
 1. From Route 22, take the exit toward NJ-28 West.
 2. Turn left onto Garretson Road for 295 feet.
 3. Turn right onto NJ-28 West for 0.3 mile.
 4. Turn right onto Meadow Road for 0.4 mile.
 5. Turn right onto Van Holten Road for 0.6 mile. Your destination will be on the right.

Site 36: Mine Hill Beach – Mine Hill Township – Morris County

- **Location:** Sunset Lake off of Green Street.
Approximate Address: 52 Edith Place, Mine Hill, NJ 07803
GPS Location: 40.87039, -74.6179
- **Parking:** Park in the Mine Hill Beach parking lot.
- **Special Note:** Areas to pick up trash:
 - A) Mine Hill beach along the banks of the lake and the parking lot.
 - B) Dickerson Mine Preserve along trails and Frank Street.
 - C) Canfield Avenue near the Mine Hill Mulch site
- **Trash Drop Off Location:** At the entrance to the Mine Hill Beach parking lot and the entrance to the Dickerson Mine Preserve. Trash can also be left at Canfield Avenue near the Mine Hill Mulch site.
- **Driving Directions:**
 1. Take US-46 West from Dover.
 2. Turn left onto 1st Street for 0.2 mile.
 3. Turn left onto Frank Street for 0.2 mile.
 4. Slight left at Green Road for 0.3 mile. Destination will be on the right.

OR

 1. Take US-46 East from Ledgewood.
 2. Make a right onto 1st Street for 49 feet.
 3. Take the first left to stay on 1st Street for 0.5 mile.
 4. Continue onto Dickerson Mine Road for 0.1 mile.
 5. Turn right at Frank Street for 0.3 mile. Destination will be on the right.



Site 37: The Valley – Mendham Township – Morris County

- **Location:** At the North Branch of the Raritan River along Roxiticus Road.
Approximate Address: 339 Pleasant Valley Road (Schiff lot), Mendham, NJ 07945
GPS Location: 40.750099, -74.629774
- **Meeting Location/Parking:** Park at Schiff Nature Center.
- **Special Note:** Carpool over to the cleanup areas: A) Pick up litter along Roxiticus Road from Pleasant Valley Farm to the Fire Access Lane at the Schiff Nature Preserve B) Hub Hollow/Branch Road C) Pleasant Valley Road
- **Trash Drop Off Location:** Trash bags can be dropped at the intersection of Union Schoolhouse Road and Roxiticus Road.
- **Driving Directions:**
 1. Take Route 206 North in Bedminster.
 2. Make a sharp right onto Pottersville Road in 0.6 mile.
 3. Turn left onto Main Street in 371 feet.
 4. Take the first right onto Dewey Avenue in 0.1 mile.
 5. Turn left onto Mendham Road in 203 feet.
 6. Take the first right onto Mosle Road in 2.7 miles.
 7. Slight right onto Pleasant Valley Road in 0.3 mile. Destination will be on the right. Proceed slowly up the long driveway.

Site 38: North Branch Reformed Church – Bridgewater Township – Somerset County

- **Location:** At the North Branch Raritan River near the North Branch Reformed Church off of the Easton Turnpike (Route 28).
Approximate Address: 203 Route 28, Bridgewater, NJ 08807 (between Meadow Road and Church Road--at end of Milltown Road)
GPS Location: 40.599447, -74.671041
- **Meeting & Parking Location:** Park in parking lot on Church Road.
- **Special Note:** Areas to pick up trash: A) Along Brook and on both sides of Raritan River B) Along Church Road and on flood plain C) Milltown Roller Hockey Rink off of Milltown Road D) At North Branch Conservation I lot (40.600, -74.6745) and Ten Eyck Park off Route 28 E) Printmaking Center of NJ
- **Trash Drop Off Location:** Bags can be dropped by the trash can in the North Branch Park parking lot and the Hockey Rink Parking lot.
- **Driving Directions:**
 1. Take I-287 South
 2. Take exit 17 to merge onto US-202 South/US-206 South toward US-22 West/Somerville/Flemington for 1.0 mile.
 3. Merge onto US-22 West via the ramp to Clinton.
 4. Take the exit toward Route 28 West North Branch.
 5. Take Route 28 past Meadow Road. Church is on Right.
 6. Turn right on to Church Road. Parking lot will be on the left behind the church.

OR

 1. Take I-287 North.
 2. Take exit 14B on the left to merge onto US-22 West toward US-202/US-206/Clinton for 6.1 miles.
 3. Take the exit toward Route 28 West North Branch.
 4. Take Route 28 past Meadow Road. Church is on Right.
 5. Turn right on to Church Road. Parking lot will be on the left behind the church.

**Site 39: Studdiford Drive & Opie Road Bridges – Hillsborough –
Somerset County**

- **Special Note:** Registration is full. Please register for an alternate stream cleanup site.

Site 40: Heritage Park – Bethlehem Township - Hunterdon County

- **Location:** Along the Turkey Hill Brook off of Vliet Farm Road
Approximate Address: Heritage Park on Heritage Park Lane off Vliet Farm Road
GPS Coordinates: 40.666969, -75.051705
- **Parking:** Parking lot at Heritage Park near the recreational fields.
- **Special Note:** Areas to pick up trash: Along the Turkey Hill Brook, recreational fields, playground, trails, wildflower meadows, and butterfly gardens.
- **Trash Drop Off Location:** At the entrance to the parking lot at Heritage Park.
- **Driving Directions:**
 1. From Route 78 West, take exit 7 for NJ-173 toward West Portal/Bloombury for 0.2 mile.
 2. Turn left onto NJ-173 East/Highway 173 East for 1.4 miles.
 3. Turn left onto Vliet Farm Road for 0.3 mile. Your destination will be on the left.

Site 41: The Commons at Lebanon - Lebanon Borough - Hunterdon County

- **Location:** Round Valley Reservoir off of Route 22.
Approximate Address: 24 Cherry Street, Lebanon, NJ 08833
GPS Coordinates: 40.638694, -74.832462
- **Meeting Location & Parking:** Park in the parking lot next to the clubhouse pool.
- **Special Note:** The cleanup will focus on the South Branch Rockaway Creek as it parallels Edgerton Drive.
- **Trash Drop Off Location:** Trash will be left at the culvert near the clubhouse.
- **Driving Directions:**
From the East
 1. Take Route 78 West.
 2. Take exit 20A toward Lebanon for 0.2 mile.
 3. Merge onto Cokesbury Road for 0.4 mile.
 4. Turn left onto Main Street for 0.1 mile.
 5. Turn right onto Cherry Street for 0.2 mile.
 6. Turn left onto Edgerton Drive for 269 feet. Your destination will be on the left.

OR

From the West

 1. Take Route 78 East.
 2. Take exit 18 for US-22 East toward Annandale/Lebanon for 0.5 mile.
 3. Keep right at the fork to continue toward US-22 East for 0.1 mile.
 4. Continue onto US-22 East for 1.2 miles.
 5. Slight right onto Main Street for 0.7 mile.
 6. Turn right onto Cherry Street for 0.2 mile.
 7. Turn left onto Edgerton Drive for 269 feet. Your destination will be on the left.

Site 42: Municipal Park - Alexandria Township - Hunterdon County

- **Special Note: Special Note:** Registration is full. Please register for an alternate stream cleanup site.

- **Location:** Harihokake Creek at Alexandria Park
Approximate Address: 242 Little York Mt Pleasant Rd, Milford, NJ 08848
GPS Coordinates: 40.589365, -75.055509

- **Parking:** Park in the parking lot at the Municipal Park.

- **Special Note:** Volunteers will meet at the Municipal Park to register, pick up supplies and be assigned a location to cleanup.

- **Trash Drop Off Location:** To be decided.

- **Driving Directions:**
 1. From Route 12 West, turn right onto Kingwood Road for 2.3 miles.
 2. Continue onto Palmyra Corner Road for 0.7 mile.
 3. Turn left to stay on Palmyra Corner Road for 0.8 mile.
 4. Continue onto County Road 519/Little York Mt. Pleasant Road for 2.3 miles.
 5. Turn right onto Milford Mt Pleasant Road for 0.1 mile. Destination will be on the left.

Site 43: Union Cemetery - Washington Township – Morris County

- **Location:** Along the Musconetcong River at the Union Cemetery
Approximate Address: 173 Mountain Avenue, Hackettstown, NJ 07840
GPS Coordinates: 40.843692, -74.822567
- **Parking:** Park along the road inside the cemetery next to the Musconetcong River.
- **Special Note:** This cleanup will occur along the banks of the Musconetcong River.
- **Trash Drop Off Location:** At the maintenance building near East Avenue.
- **Driving Directions:**
 1. From 46 West, turn left onto East Avenue for 0.4 mile. Your destination will be on the right. Follow the driveway to the river.

Or

 1. From 57 East, turn left onto Mountain Avenue for 0.7 mile. Your destination will be on the right.

Site 44: Basilone Park – Raritan Borough – Somerset County

- **Location:** Raritan River tributary off of Woodmere Street
Approximate Address: 255 Woodmere St, Raritan, NJ 08869
GPS Coordinates: 40.567893, -74.648108
- **Parking:** Park at JFK primary school or along Woodmere Street.
- **Special Note:** Meet at the basketball courts. Cleanup the stream near JFK primary school and as it passes through Basilone Park. Trash can also be removed from Woodmere Street.
- **Trash Drop Off Location:** Trash can be dropped at Centre Street.
- **Driving Directions:**
 1. From Route 202 in Branchburg, turn onto Old York Road heading towards Raritan Borough for 3.1 miles.
 2. Turn left on Woodmere Street for 0.5 mile. Your destination will be on the left.

Site 45: Hampton Borough Park – Hampton Borough – Hunterdon County

- **Location:** Along the Musconetcong River at the Hampton Borough Park
Approximate Address: 20 Valley Rd, Hampton, NJ 08827
GPS Coordinates: 40.709462, -74.966734
- **Parking:** Park in the lot off of Park Drive.
- **Special Note:** The Musconetcong Watershed Association and Raritan Headwaters are co-hosting an Earth Day cleanup at this site.

Site 46: Towpath – Frenchtown – Hunterdon County

- **Special Note:** Registration is full. Please register for an alternate stream cleanup site.

Site 47: “The Meadows” – Highland Park Borough – Middlesex County

- **Special Note: Special Note:** Registration is full. Please register for an alternate stream cleanup site.
- **Location:** A riverside conservation area (a small stream separates the lawns of Donaldson Park from a tidal wetlands downstream)
Approximate Address: 444 Valentine Street, Highland Park Borough 08904GPS
Coordinates: 40.493024, -74.417695
- **Parking:** In the Highland Park Department of Public Works parking lot at the end of South 5th Avenue.
- **Special Note:** Lower Raritan Watershed Partnership, coLab Arts, Environmental Club at Highland Park High School, Highland Park Environmental Commission, Highland Park Environment and Ecology Group and Raritan Headwaters are co-hosting an Earth Day cleanup. Lower Raritan Watershed Partnership, coLab Arts, and Raritan Headwaters are co-hosting an Earth Day cleanup. The cleanup area will focus on the kiosk at the entrance to the Conservation Zone near the DPW lot.
- **Trash Drop Off Location:** To be decided.

Site 48: St. Matthias School – Franklin Township – Somerset County

- **Special Note:** Registration is full. Please register for an alternate stream cleanup site.

**Site 49: Hunterdon Central Regional High School – Flemington Borough
– Hunterdon County**

- **Special Note:** Registration is full. Please register for an alternate stream cleanup site.