

Watershed Tools for Local Leaders

Climate Resilient Municipalities: Controlling Stormwater, Protecting Streams & Maintaining Water Quality

An Introduction to Stormwater Utilities



**Raritan
Headwaters**

Your water is our mission.



Watershed Tools for Local Leaders

An Introduction to Stormwater Utilities

- What is stormwater?
- Is stormwater a problem?
- Is the problem getting worse?
- What is a stormwater utility?
- Is a stormwater utility right for my community?

Is Stormwater a Problem?



South Branch, Raritan River, Hurricane Irene, October 2011

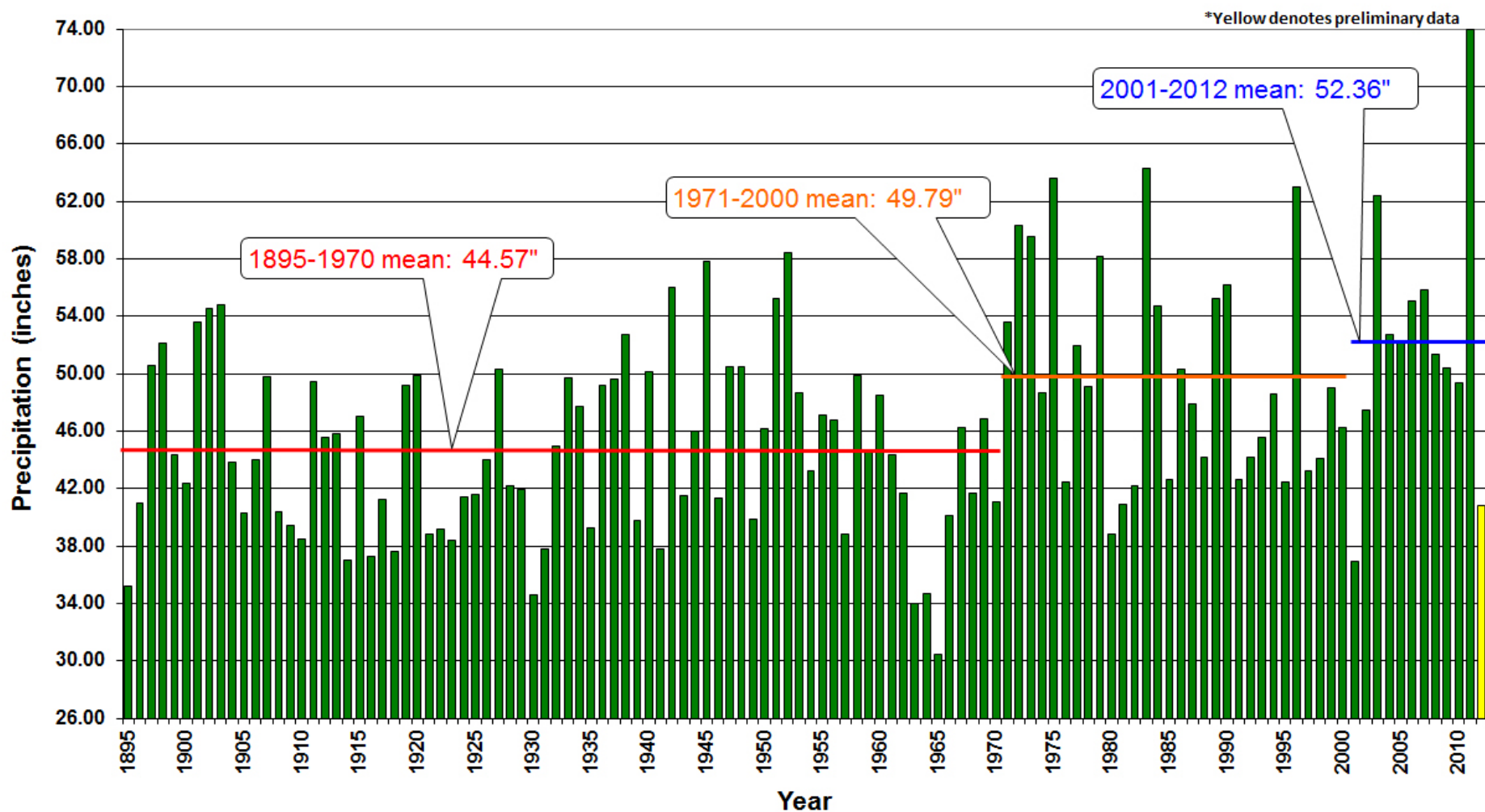
Is Stormwater a Problem?



South Branch, Raritan River, May 2019

Is the problem getting worse?

Northern NJ Annual Precipitation (1895-2012)



Is the Problem Getting Worse?

QUIZ!

The average amount of additional annual rainfall now received in the Raritan Basin is enough to fill:

- a. Spruce Run Reservoir (11 billion gallons)
- b. Wanaque reservoir (30 billion gallons)
- c. Round Valley Reservoir (55 billion gallons)
- d. All of the above



Watershed Tools for Local Leaders

An Introduction to Stormwater Utilities

1. What is a Stormwater Utility?
 - Why do I have to do this?
 - Why do I need one?
 - Is this new?
2. How Much Does it Cost?
 - How do we fund it?
 - How do we set rates?
3. What Next?

Watershed Tools for Local Leaders

An Introduction to Stormwater Utilities

Clean Stormwater and Flood Reduction Act:

https://www.njleg.state.nj.us/2018/Bills/PL19/42_.PDF

NJ Department of Environmental Protection:

<https://www.nj.gov/dep/stormwater/>

Watershed Tools for Local Leaders

An Introduction to Stormwater Utilities

Where Can I Get More Information?

- Flood Defense New Jersey
 - <https://www.njlcvef.org/flood-defense/resources>
- Rutgers
 - <https://njaes.rutgers.edu/environment/>
- New Jersey Future
 - <https://www.njfuture.org/issues/environment-and-agriculture/water-sewer/stormwater-utilities/>
- An Internet Guide to Financing Stormwater Management
 - https://cues.rutgers.edu/meadowlands-district-stormwater/pdfs/Doc18_Internet%20guide%2oto%2ofinancing%2os tormwater%2omanagement.pdf
- Developing a Stormwater Management Utility
 - https://cues.rutgers.edu/meadowlands-district-stormwater/pdfs/Doc25_Cyre1987_Developing_a_Utility.pdf

A photograph of a stone arch bridge spanning a small stream in a lush forest. The bridge is constructed from dark, irregular stones and is partially covered in moss. The stream flows through the center of the arch, surrounded by rocks and greenery. The background is filled with tall trees and dense foliage.

Questions?

Il Kibler
kibler@raritanheadwaters.org



**Raritan
Headwaters**

Your water is our mission.