

# MACROINVERTEBRATE GROUPS

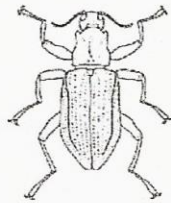
## BEGINNER'S PROTOCOL - PICTURE KEY

**GROUP 1** *These organisms are generally pollution-intolerant.*

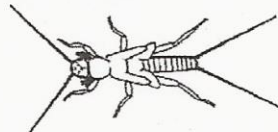
*Their dominance generally signifies EXCELLENT-GOOD WATER QUALITY*



RIFFLE BEETLE  
(larva)



RIFFLE BEETLE  
(adult)



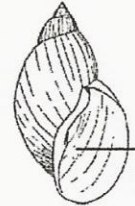
STONEFLY  
(nymph)



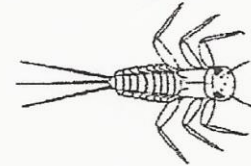
CADDISFLY  
(larva)



SNAIL



SNAIL



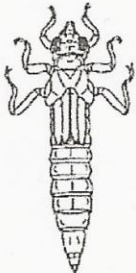
MAYFLY  
(nymph)



MAYFLY  
(nymph)

opens to  
the right

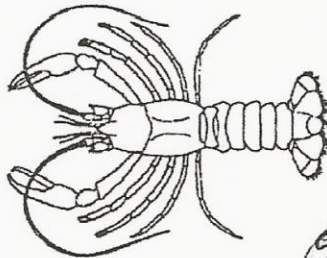
**GROUP 2** *These organisms exist in a WIDE RANGE of water quality conditions*



DRAGONFLY  
(nymph)



CRANEFLY  
(larva)



CRAYFISH



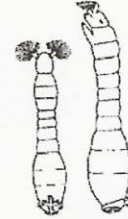
SOWBUG



FILTERING  
CADDISFLY  
(Hydropsychidae)  
(larva)



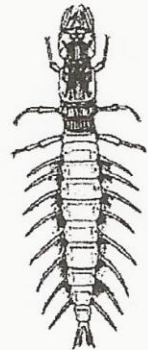
BLACKFLY  
(pupa)



BLACKFLY  
(larva)



SCUD



HELLGRAMMITE  
(Dobsonfly)  
(larva)

**GROUP 3** *These organisms are generally tolerant of pollution.*  
*Their dominance usually signifies FAIR-POOR WATER QUALITY*



MIDGE  
(larva)



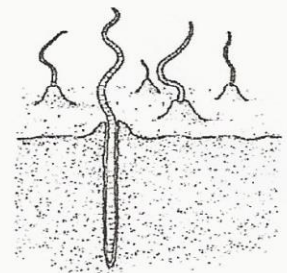
MIDGE  
(larva)



MIDGE  
(pupa)



POUCH  
SNAIL  
(Physidae)



AQUATIC WORM

opens to  
the left